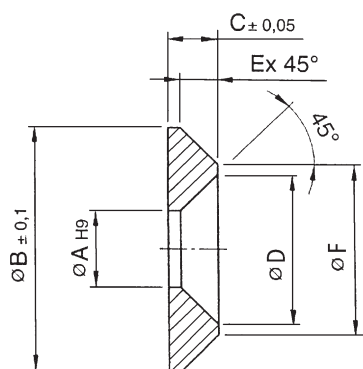




# RONDELLE TORNITE CONICHE

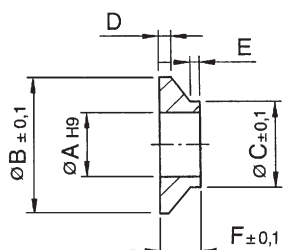


MATERIALE: C 45 - UNI 7845 - FOSFATATO - ZINCATO

TIPO	$\varnothing A$	$\varnothing B$	C	$\varnothing D$	E	$\varnothing F$
C-RC 4	4.1	13	3	8	2.1x45°	8.8
C-RC 5	5.2	16	3.5	10	2.6x45°	10.8
C-RC 6	6.5	18	3.5	12	2.1x45°	13.8
C-RC 8	8.5	25	5	16.5	3.5x45°	18
C-RC 10	10.5	33	7	20.5	6x45°	21
C-RC 12	12.5	40	8	24.5	7x45°	26

Confezioni da 30 pezzi

# RONDELLE TORNITE PER TESTE SNODATE



MATERIALE: C 45 - UNI 7845 - FOSFATATO - ZINCATO

TIPO	$\varnothing A$	$\varnothing B$	C	$\varnothing D$	E	F
C-RS 6	6.5	15	9	1.5	1	4
C-RS 8	8.5	22	12	1.5	2	6.5
C-RS 10	10.5	22	14	1.5	3	6.5

Confezioni da 30 pezzi